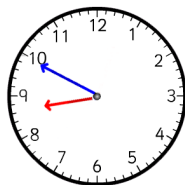


SCHOOL STARTS AT 08:50—PLEASE BE ON TIME FOR SCHOOL



ABBEYS PRIMARY SCHOOL
Melrose Avenue, Bletchley, Milton Keynes, MK3 6PS
Tel: (01908) 375230
www.abbeyprimary.org
Mrs Sophie Good, Headteacher

Dear Abbeyes' Families

School Newsletter: September 2021

Welcome to the new school year. I hope everybody enjoyed some family time and relaxation over the summer holidays, and made the most of the increased freedoms that came with the lifting of social restrictions in July. Here at school it is now no longer necessary to keep pupils in bubbles. Children do not need to avoid mixing, at break and lunchtimes, and classroom layouts can be more socially grouped, meaning that school life will feel more normal. Covid infection control will be managed going forward through continued good practice with **hygiene, ventilation and testing**. If needed, our outbreak management planning will support any temporary measures required, should the situation or national guidance change. As in the past, if someone in your household develops symptoms consistent with Covid, you should book a test as soon as possible and follow the most up to date NHS guidance.

Breakfast Club: We are trialling our new breakfast club this term, from **Monday 13th September**. This will offer children a selection of breakfast choices, along with a range of healthy lifestyle and wellbeing activities for a positive start to each day. Children can attend from 8.00 am, at a cost of £1.20 per day. Please note places must be pre-booked using our Parent-Pay system. Ask the School Office for more details or log in to Parent-Pay to pre-book space for your child on a weekly or occasional basis.



Online Communications: Our home-school communications are going digital from this term. From the 1st October, you will need to opt-in to receive paper copies of letters, newsletters and other updates, or you will automatically receive these by email or from a text messaging to your mobile phone. Please make sure we have your most up to date email address and mobile number so that you don't miss out on important communications from us.

After-School Clubs are back from 16th September!

Look out for separate information sent home with the details of the clubs we are able to offer this term. Clubs run on a Thursday, straight after school until 4pm, and dates for this term are shown on the attached Diary Dates sheet for the year. *Please note that places at clubs are offered on a first-come, first-served basis.*



Contact Details and End of Day Arrangements

We need at least two contact numbers as well as an email address and the end of day arrangements for every child. Please let us know if there are **any changes** to the information we hold for your child, using the attached form. Without permission we will not be able to release your child to an adult you have not identified to us, or let them walk home alone at the end of school. If someone different is going to be picking up, please call to let us know. We also need a quick call if you have been held up and may be late.



Contact Details and GDPR: Please note that the General Data Protection Regulations and Data Protection Act 2018 do not limit the sharing of information where there is a child safety issue.

Riding to School



Children are still welcome to ride their bike or manual scooter to school, as we encourage sustainable travel and active lifestyles. However, please remember the safety rule is that they cannot be ridden around on the playground and must be parked on arrival.



The 2021-22 school year list of Diary Dates is attached. Please check for term dates and events, including the children's class assemblies. The list will be regularly updated as more events enter the school diary, and dates are also on our website www.abbeyprimary.org. Please use our website to stay up to date with life at Abbeyes.

School Lunches

Please remember that all school lunches need to be ordered online using the ParentPay system, whether you normally pay for your child's lunches or they receive funded school meals.

Orders must be completed by 11:59pm on a Wednesday for the following week. If you have any queries or need help with online access, please contact the School Office who will be happy to help.



Planners

Please take a few minutes each week to check and sign your child's planner, which can be used for contact between home and school. A lost planner will result in a £3 charge, so children do need to be encouraged to look after them and log their home reading.



School Trips and Visits

School trips can once again take place, subject to continuing health and safety guidance. Trips and visits are a valuable and enjoyable part of our curriculum enrichment, but please be aware they may have to be cancelled if we don't receive sufficient parental contributions. We need you to support any payable trips that are organised for your child this year—they are often subsidised by the school to keep costs down, but we do rely on parents' and carers' contributions.

Best wishes

Mrs Sophie Good
Headteacher

Uniform

Everyone looks extremely smart in their school uniform, so as always can I remind parents that all items of clothing should be labelled with your child's name.

Also, your child needs to wear black footwear with their school uniform. These can be trainers, (plain) flat boots or more traditional school shoes: but always choose them in black for school!

Thank you everybody.

**Abbeyes
Primary**





Attendance Update

As the Attendance Officer for Abbeys, I support the school in monitoring and improving attendance, I would like to remind parents of the following -

Please ensure children arrive promptly for a School start of 8.50am, as being just five minutes late can result in lost learning time and a disruption to the class.

The school day is 8.50 – 3.15. We understand that children do fall ill on occasions or sometimes need to attend appointments in school time. However, if possible all appointments should be made outside of these times to avoid interruptions to the school day.

Holidays during term time cannot be authorised and are subject to a Fixed Penalty Fine of £60 per parent, per child (payable within 21 days). This is In line with Government legislation and the LA's attendance policy.

If you wish to discuss your child's attendance with me I can be contacted via the school office.

Mrs S Jamieson

Attendance Officer – Bletchley Partnership of Schools