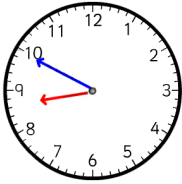


REMEMBER: OUR SCHOOL DAY STARTS AT 10 TO 9 – LET’S ALL BE ON TIME FOR SCHOOL!



ABBEYS PRIMARY SCHOOL
Tel: 01908 375230
office@abbeyprimary.org
www.abbeyprimary.org

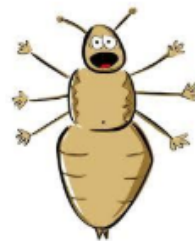
Dear Abbeys’ Families

February 2020

The end of the first half of Spring term means we have now reached the halfway point in the school year. So far this winter the weather has not disrupted school life, as can sometimes be the case. In the event of a school closure, please always check the Abbeys school website for the most up to date information, www.abbeyprimary.org as in the past the Milton Keynes Council website has crashed due to the amount of visits to check school closures. In the meantime, please make sure your child has winter coat, gloves, hat and scarf to keep them warm both in and out of school.



REMINDER! Can I politely remind all adults that Abbeys is a non-smoking site. This includes anyone who is smoking or vaping whilst sitting in their car parked on the site. Thank you in anticipation of your support for our children’s health and safety.



Please help us in the fight against headlice by making sure that long hair is tied back for school.

Thank you!



WORLD BOOK DAY

Thursday 5th March is World Book Day —come to school dressed as your favourite book character!
No donations required.

As we break up for half-term holiday today, I hope all families get the chance to have some relaxing time together next week.

School will re-open for the second half of the Spring term on **Monday 24th February**. We look forward to welcoming everyone back after a well-earned break.

National Safer Internet Day took place in schools across the country on Tuesday 11th February, and children in school took part in a range of activities and Computing lessons designed to help keep them safe online. We have recently completed a full refurbishment of our Computing suite, and all the children are enjoying using the new computers to develop their skills, whilst staying safe.

Information for parents is available on our website, www.abbeyprimary.org



We value good communication between home and school, so please continue to share any relevant information with us about your child, including through use of the Home-School Planners. However, please be aware that if you need to speak to your child’s teacher at the beginning or end of the school day, the teacher’s first responsibility is to get the children into class in good time at the morning bell, or see them all out safely at 3.15. It may be more convenient to make an appointment to talk to a member of staff, including myself, and you are welcome to do this if needed.

Sophie Good

Mrs Sophie Good, Headteacher